



All Saints Close

Arksey, Doncaster, DN5 0RW

£650 Per month



Welcome to this charming apartment located in the peaceful setting of All Saints Close, Arksey, Doncaster. This delightful property features an entrance hall, lounge, kitchen two bedrooms and a bathroom.

Situated in a tranquil neighbourhood, this apartment provides a serene retreat while still being conveniently close to local amenities and transport links. Residents can enjoy the benefits of a community-oriented area, with parks and shops within easy reach.

This property presents an excellent opportunity for those looking to settle in a lovely part of Doncaster. With its appealing features and prime location, this apartment is sure to attract interest. Do not miss the chance to make this delightful space your new home.



Description

AVAILABLE NOW - A first floor two bedroom apartment located in a quiet cul de sac comprising of an entrance hallway, kitchen, lounge, two beds and a family bathroom and allocated parking in a popular area of Arksey.

Entrance Hall

The apartment is entered through the ground floor doorway leading to the first floor where apartment 4 & 5 are located. Leading into the hallway with carpet, rear facing window, door intercom buzzer and heating thermostat.

Kitchen 10'5" x 7'0" (3.20m x 2.15m)

The kitchen has cream high gloss wall and base units with black worktops, part tiled splash back, integrated electric fan assisted oven with chrome extractor over, space for a washing machine, dishwasher fridge / freezer, vinyl flooring, radiator and centre ceiling light. The combi gas boiler is wall mounted in the kitchen.

Lounge 20'3" x 9'10" (6.18m x 3.00m)

A dual aspect room with carpet and radiator.

Bedroom One 12'11" x 9'7" (3.95m x 2.93m)

A double bedroom front facing with radiator and carpet.

Bedroom Two 10'5" x 6'9" (3.20m x 2.06m)

A front facing bedroom with carpet and radiator.

Bathroom 10'5" x 7'0" (3.20m x 2.14m)

The bathroom comprises of a white three piece bathroom suite; bath with shower over and glass shower screen, wc and hand basin, extractor, part tiled walls, radiator and vinyl flooring.

Additional Information

There is allocated parking to the front of the apartment, small shared lawn and bin store.

Disclaimer

1. MONEY LAUNDERING REGULATIONS: Intending purchasers will be asked to produce identification documentation at a later stage and we would ask for your co-operation in order that there will be no delay in agreeing the sale.

2. General: While we endeavour to make our sales particulars fair, accurate and reliable, they are only a general guide to the property and, accordingly, if there is any point which is of particular importance to you, please contact the office and we will be pleased to check the position for you, especially if you are contemplating travelling some distance to view the property.

3. Measurements: These approximate room sizes are only intended as general guidance. You must verify the dimensions carefully before ordering carpets or any built-in furniture.

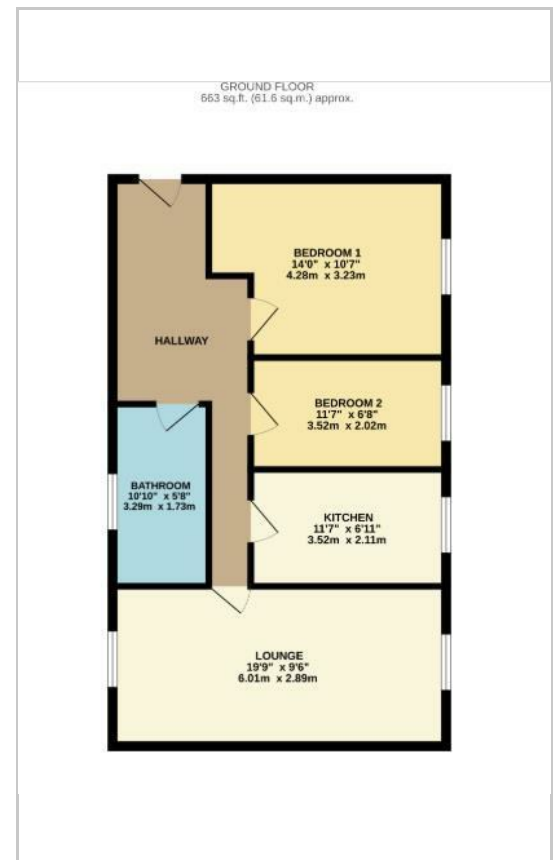
4. Services: Please note we have not tested the services or any of the equipment or appliances in this property, accordingly we strongly advise prospective buyers to commission their own survey or service reports before finalising their offer to purchase.

5. THESE PARTICULARS ARE ISSUED IN GOOD FAITH BUT DO NOT CONSTITUTE REPRESENTATIONS OF FACT OR FORM PART OF ANY OFFER OR CONTRACT. THE MATTERS REFERRED TO IN THESE PARTICULARS SHOULD BE INDEPENDENTLY VERIFIED BY PROSPECTIVE BUYERS OR TENANTS. NEITHER CLARK ESTATES OR ANY OF ITS EMPLOYEES OR AGENTS HAS ANY AUTHORITY TO MAKE OR GIVE ANY REPRESENTATION OR WARRANTY WHATEVER IN RELATION TO THIS PROPERTY.

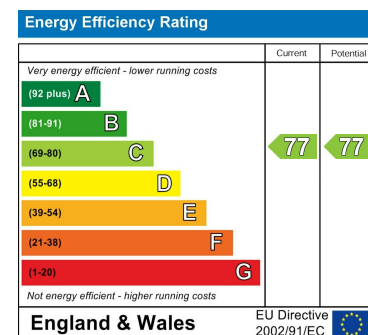
Area Map



Floor Plans



Energy Efficiency Graph



These particulars, whilst believed to be accurate are set out as a general outline only for guidance and do not constitute any part of an offer or contract. Intending purchasers should not rely on them as statements of representation of fact, but must satisfy themselves by inspection or otherwise as to their accuracy. No person in this firm's employment has the authority to make or give any representation or warranty in respect of the property.

14-16 Eldon Street, Tuxford, NG22 0LH

Tel: 01777 801 901 Email: dawn@clark-estates.co.uk www.clark-estates.co.uk